

BEDDING DETAIL ACROSS OPEN SPACE/VERGES/PATHS (SIMILAR) - CLASS S

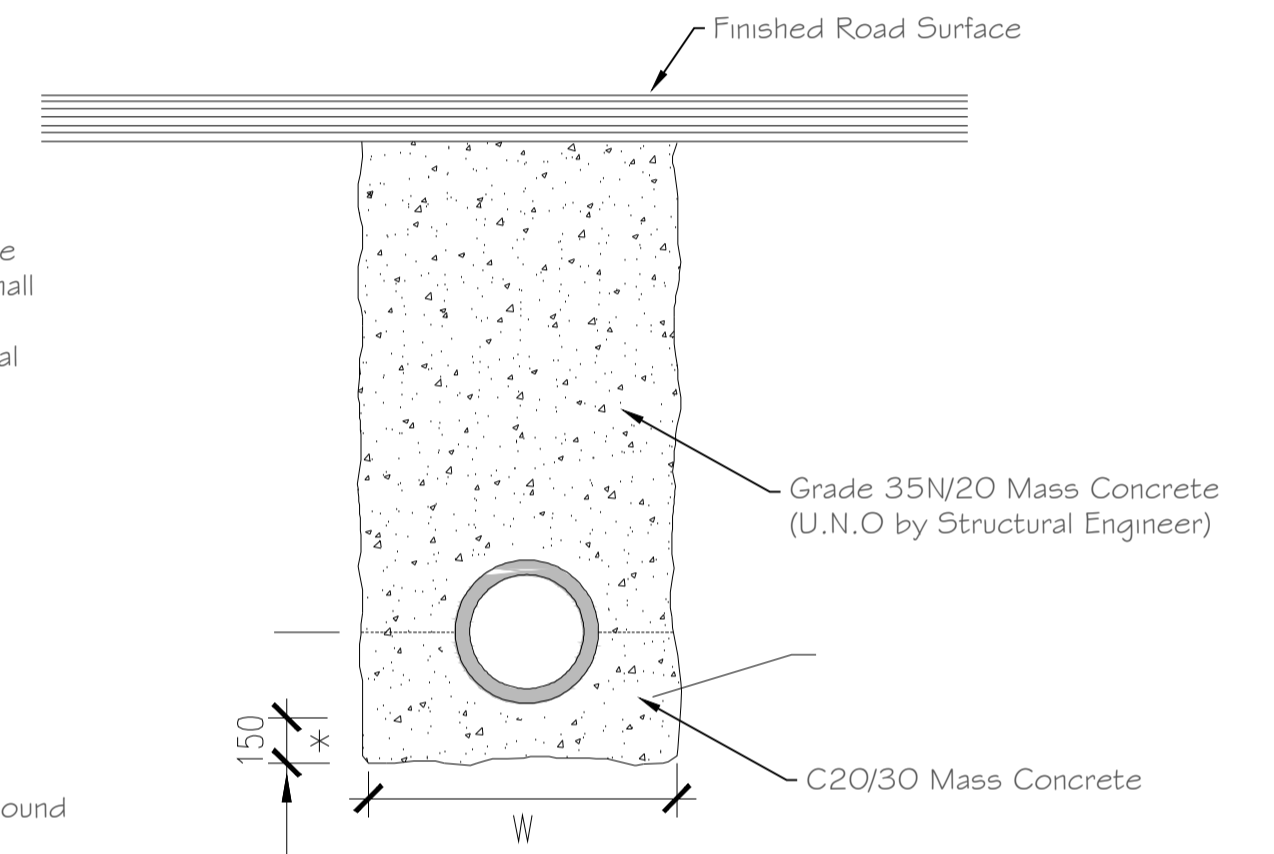
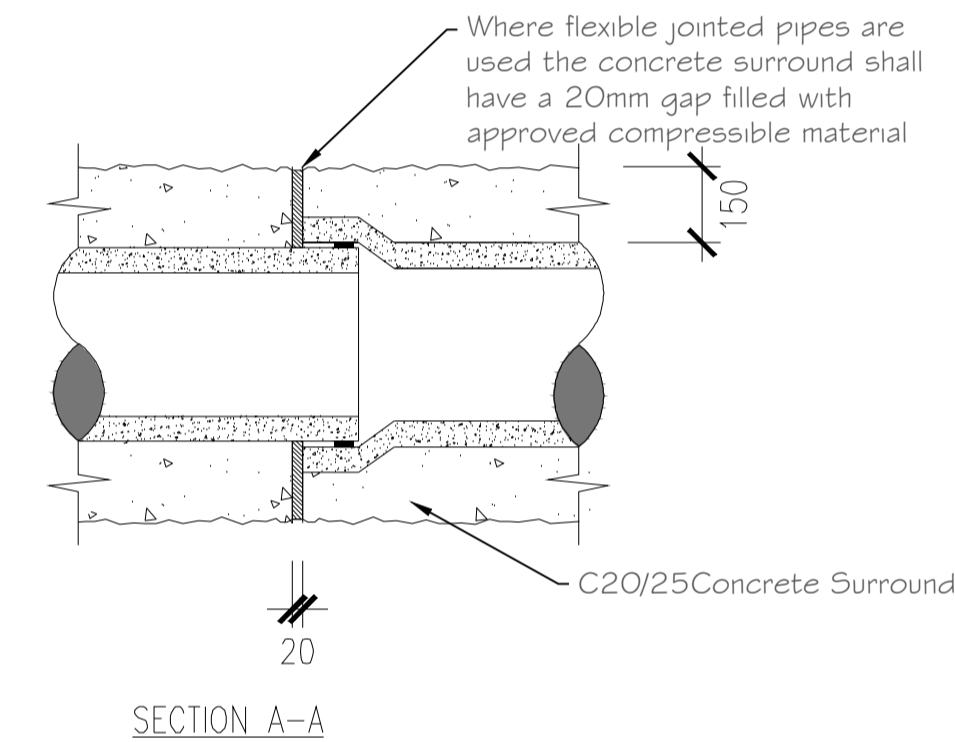
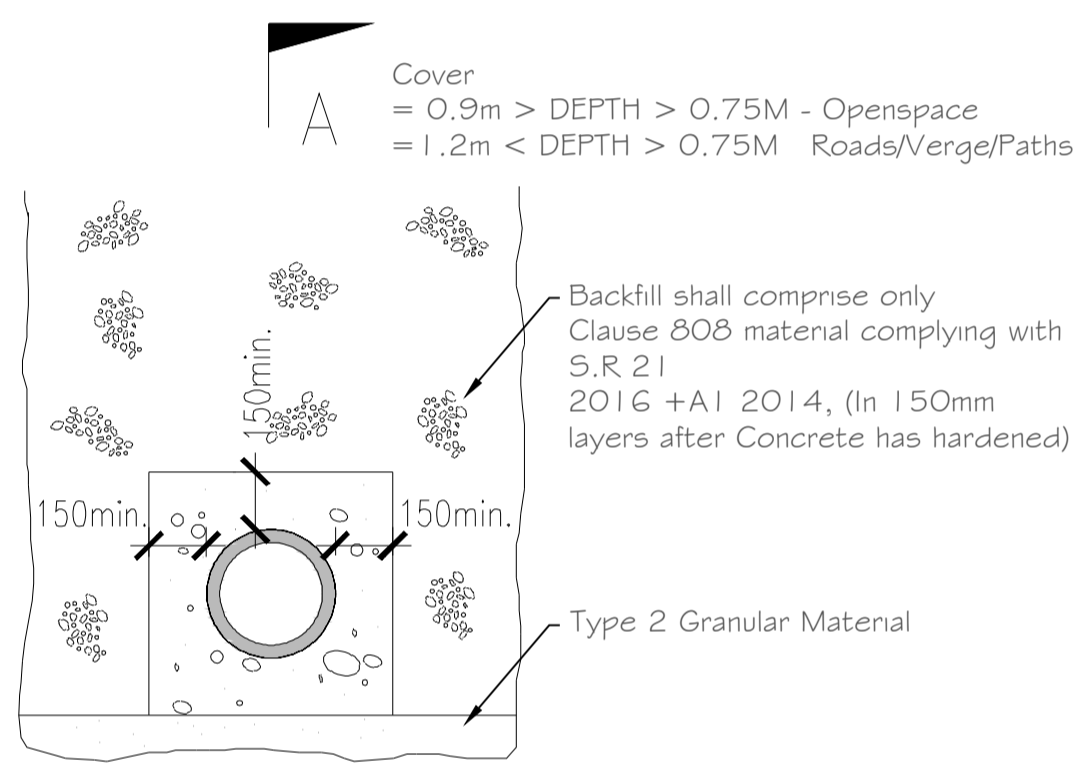
BEDDING DETAIL ACROSS ROADWAYS - CLASS S

02 Typical Filter Drain Detail 141 As Shown Scale 1:25

03 Water Service Control Unit 141 Scale 1:25

01 Bedding Details for Flexible Pipes 141 Scale 1:25

TABLE 1: TRENCH WIDTH LIMITS (W)		
NOMINAL INTERNAL Ø (mm)	MINIMUM TRENCH WIDTH mm	MAXIMUM TRENCH WIDTH mm
100	450	650
150	500	700
225	600	800
300	700	900
375	950	1150
450	1050	1250
525	1150	1350
600	1250	1450
675	1350	1550
750	1400	1600
825	1500	1700
900	1950	2150
1050	2100	2300
1200	2300	2500
ABOVE 1200	OUTSIDE Ø OF PIPE PLUS 800mm	OUTSIDE Ø OF PIPE PLUS 1000mm



TRENCH DETAIL WITH LESS THAN 900mm COVER

TRENCH DETAIL WITH LESS THAN 750mm COVER

NOTES: [FOR PERMANENT REINSTATEMENT]

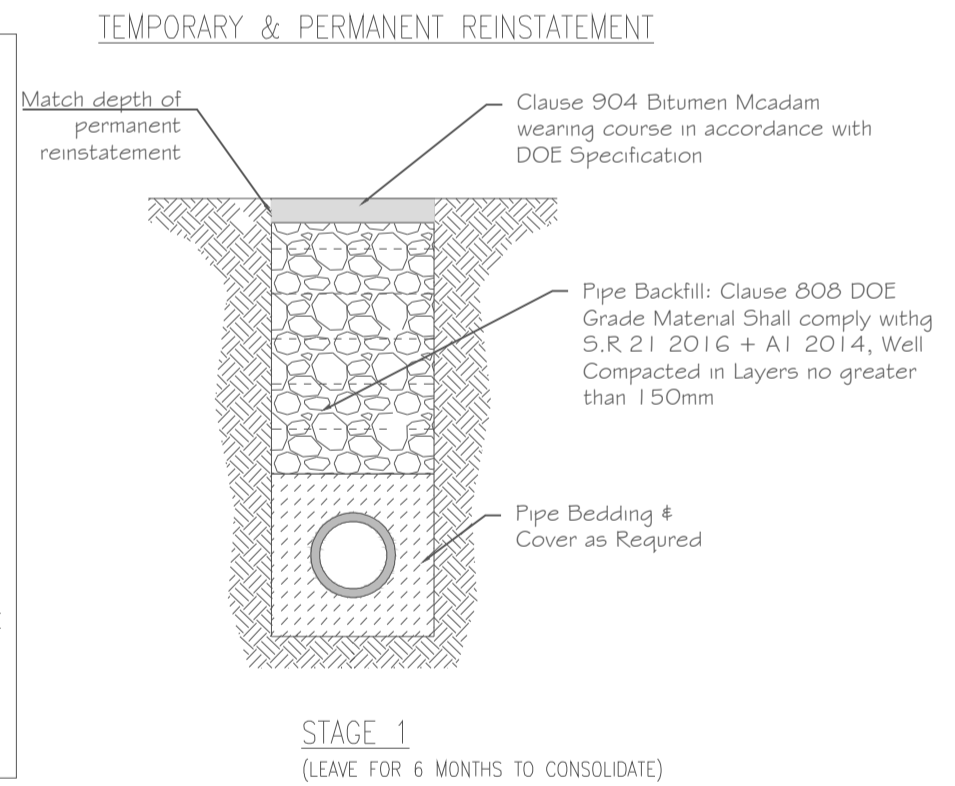
A. FORM A SAW CUT 100mm DEEP AT A MIN. OF 100mm FROM SIDES OF EXCAVATION PRIOR TO PERMANENT REINSTATEMENT. WHERE ANY TRIM LINES ARE WITHIN 400mm OF ROAD EDGE, JOINT, OTHER REINSTATEMENT, OR IRONWORK, THE TRIM LINE SHOULD BE EXTENDED TO THE INTERFACE OF SUCH SITUATIONS.

B. DIG OUT SURFACING & TOP 220mm OF C18/08 MATERIAL & REPLACE WITH NEW WIDER SURFACING ON 220mm LAYER OF LEAN-MIX CONCRETE

C. LEAN-MIX SURFACE TO BE SPRAYED PER CLAUSE 920 (TI SPEC.) PRIOR TO APPLICATION OF BINDER COURSE MACADAM.

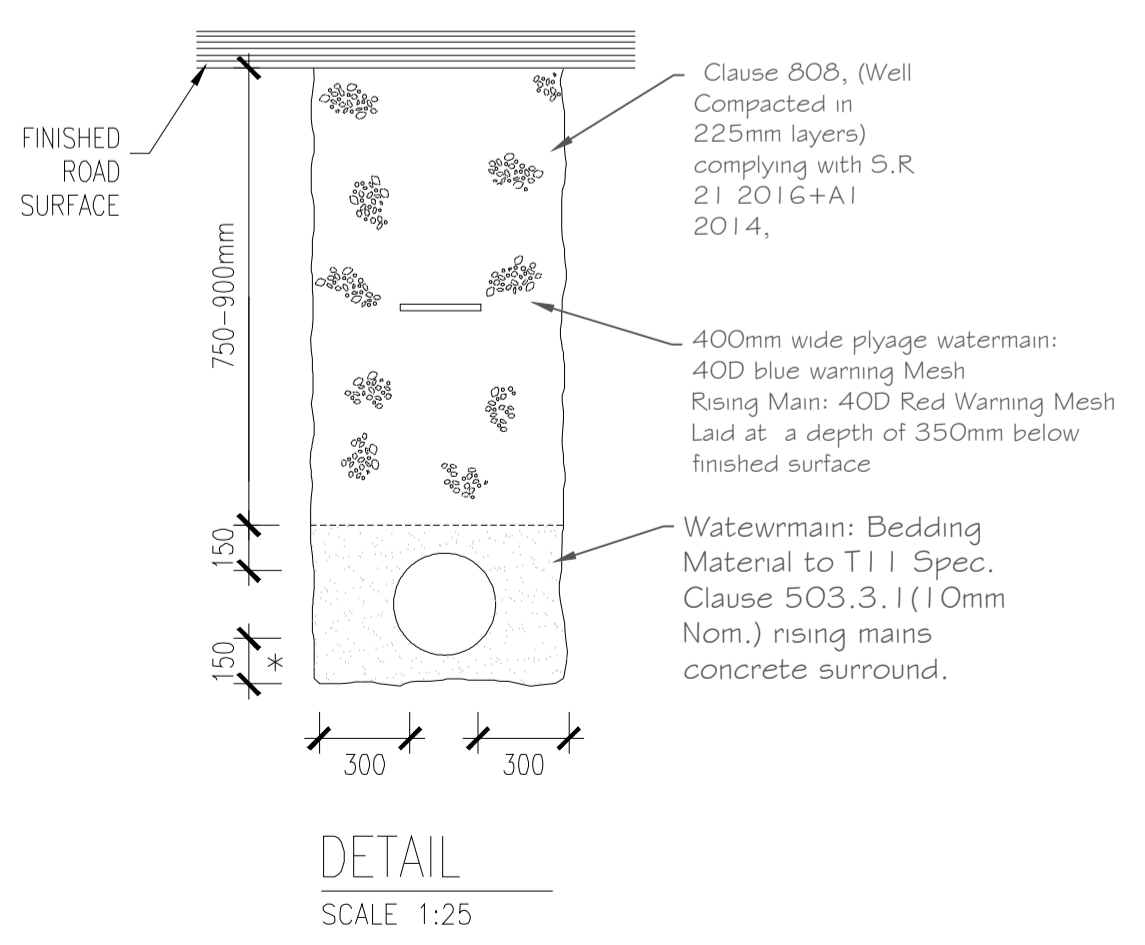
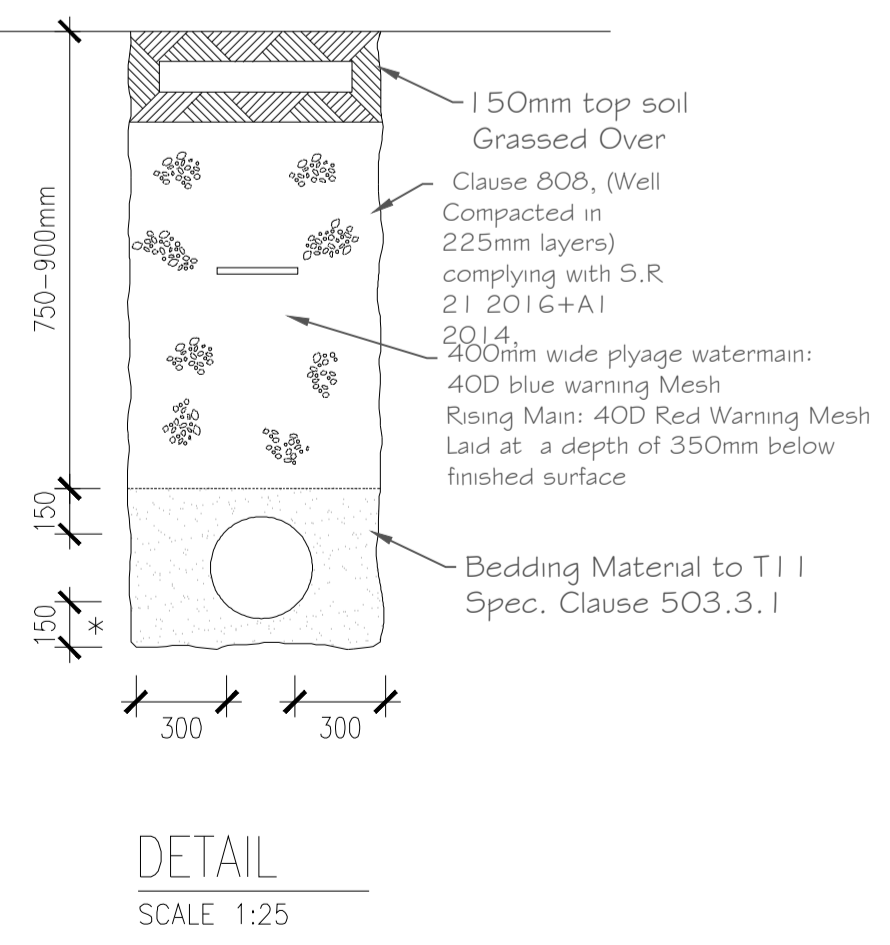
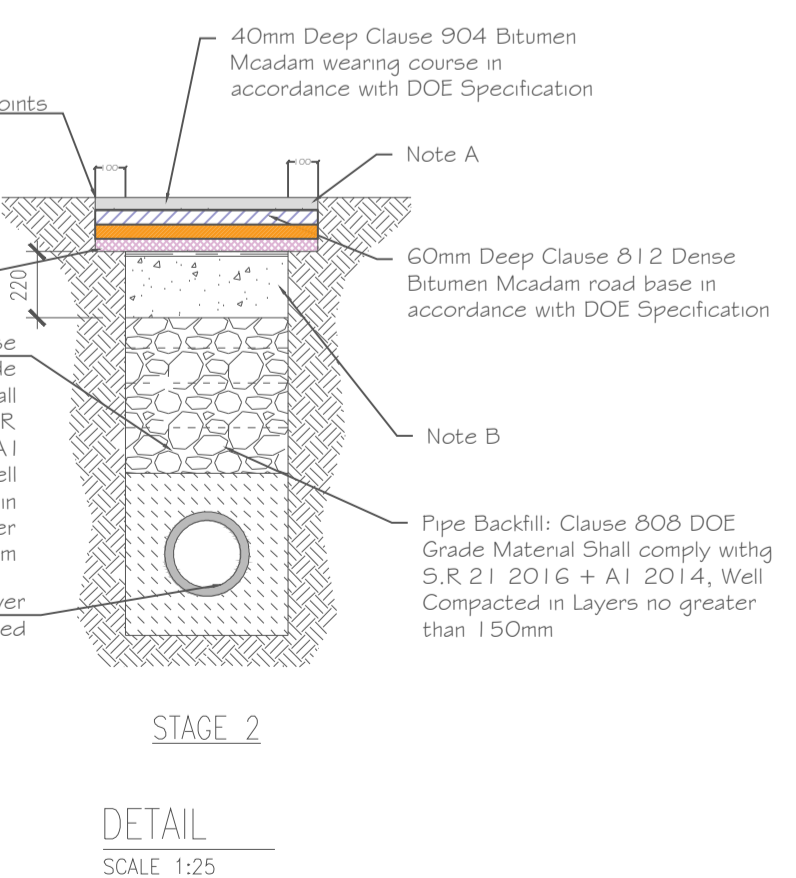
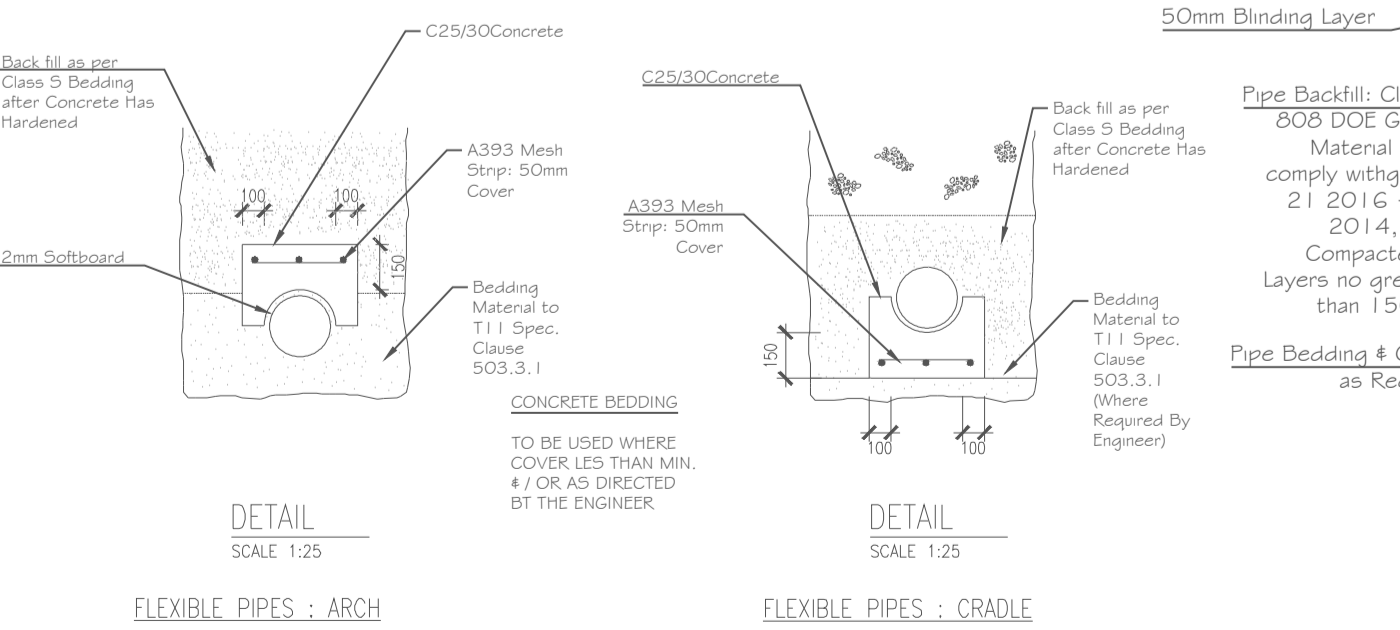
D. 100°C HOT BITUMEN BINDER 50 PEN OR COLD THIXOTROPIC BITUMEN 50 - 70 PEN TO BE APPLIED TO ALL VERTICAL CUTS IN ACCORDANCE WITH B.S.594 PRIOR TO APPLICATION OF BITUMINOUS MATERIAL.

E. JOINTS SEALED WITH HOT BITUMEN AND TOPPED WITH FINE SAND / GRIT TO GET A MINIMUM 55 SKID RESISTANCE VALUE AS DETERMINED BY THE PORTABLE SKID RESISTANCE PENDULUM USED IN ACCORDANCE WITH ROAD NOTE 27 AND SHALL NOT EXCEED 3mm THICKNESS AND 25mm WIDTH.



04 Bedding Details for Rigid Pipes 141 Scale 1:25

B	Issued for Planning	May 2019	T. Finn
A	Issued to Irish Water for Statement of Acceptance	28th April 2019	T. Finn
REV. NO.	DESCRIPTION	DATE	INITIALS



(A) BEDDING DETAIL ACROSS OPENSACE/VERGE/PATHS (SIMILAR)

(B) BEDDING DETAIL ACROSS ROADS

05 Bedding Details for Reinstatement 141 Scale 1:25

06 Watermain/Rising Main Bedding Details 141 Scale 1:25

**finn** DESIGN PARTNERSHIP

Blakestown, Ardes, Co. Louth, Ireland  
t 041 6857200 f 041 6857201 e info@finn.ie w www.finn.ie

DRAWING NO: **141** REV. NO: **B**

TITLE: **Surface Water Drainage Details (Sheet 2 of 2)**

PROJECT: **Residential Development @ Haggardstown Blackrock, Dundalk Co Louth.**

CLIENT: **Kingsbridge Consultancy Ltd 1st Floor, Block 1, Quayside Business Park, Dundalk Co Louth**

SCALE: **As Shown** DRAWN: **T. Finn**

DATE: **November 2018** CHECKED: **Sheet 1 of 2**

STATUS: **Planning Permission**

JOB NO: **1703**

NOTES:  
1. Copyright Reserved 2003 ©  
2. Work to figure dimensions only. Do not scale drawing.  
3. Where appropriate, the contractor is responsible for checking all levels and dimensions on site and shall refer all discrepancies to the Architect.  
4. Where appropriate, for details of structural, mechanical and electrical details, see Engineers drawings.  
5. Proprietary items shall be fixed in strict accordance with manufacturers instructions.  
6. Where appropriate, items shall be checked with manufacturer.  
7. The contractor shall be responsible for the coordination of structure, fixtures and services.

CIVIL STRUCTURAL ENGINEERING PROJECT MANAGEMENT